

## What is the Patient Travel Subsidy Scheme (PTSS)?

The Scheme provides financial support for patients to get specialist medical treatment when the service is not available within 50km of the patient's closest public hospital or public health facility.

Eligible patients can apply for travel and/or accommodation subsidies to help with the costs of getting to and from the closest public hospital or public health facility that provides the specialist medical treatment. Patients who need help when travelling can also apply for a patient escort to travel with them.

The PTSS does not cover the full costs of travelling for specialist medical treatment. Any costs incurred in addition to approved subsidies are at the patient's expense.

### Am I eligible for PTSS?

Patient must be a Queensland resident and be eligible for Medicare to receive PTSS subsidies.

They must also have a valid referral for an approved PTSS specialty, that is not available within 50km of their nearest public hospital or health facility.

### What subsidies are available?

**Travel and accommodation subsidies are available for eligible patients and their patient escort.** Patients should apply for PTSS as early as possible prior to travel.

Eligible patients can submit one retrospective application for assessment for travel undertaken in the last 12 months. **The approved travel subsidy** is for the most clinically appropriate and cost-effective mode of transport available, and is calculated using the rates on the table to the right.

Mode of transport	Subsidy amount
Commercial—air, bus, ferry or rail	Fully subsidised payment*
Private car (driving)	A rate of \$0.30 per km, calculated using a predetermined toll-free route between facilities.

\* equal to the lowest economy rate (excluding GST)

**The accommodation subsidy** provides financial support for accommodation costs for as long as the patient is medically required to be away from home and is calculated using the rates below:

Type of accommodation	Subsidy amount *per approved person
Commercial accommodation	Up to \$60 per night
Private accommodation	\$10 per night

**Note:** Patients and patient escorts must pay for the first four nights of accommodation each financial year unless the patient holds a PTSS eligible concession card or is under 18 years of age.

The accommodation subsidy does not apply to any nights the patient spends in hospital. Patient escorts may still be eligible during this time.

My PTSS ID is:

My local hospital or health facility is:

Their phone number is:

Their email address is:



## Do you need to travel for a specialist medical appointment? >>>

If you are a permanent Queensland resident, and have a referral to a specialist medical service that is not available locally, you may be eligible for financial support as part of the Patient Travel Subsidy Scheme (PTSS).



For more information visit:

[www.health.qld.gov.au/ptss](http://www.health.qld.gov.au/ptss)  
or call 13 HEALTH (13 43 25 84)

SC180093 01/19



Queensland  
Government

# The patient's guide to the PTSS journey

STEP 1

## Referral

» The patient needs to fill out the **PTSS Patient Registration Form (Form A)** to register for PTSS.

Tick when complete



STEP 2

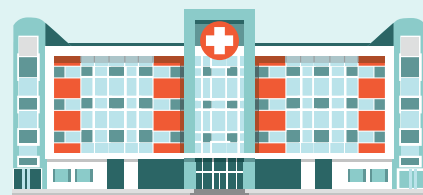
## Assessment

The referring clinician needs to fill out the **PTSS Travel Referral Form (Form B)** for the patient to apply for travel, accommodation and patient escort subsidies.

- » online at [www.health.qld.gov.au/ptss](http://www.health.qld.gov.au/ptss) or,
- » at any Queensland public hospital or public health facility in person or via email, fax or post.
- » The patient's application is assessed against the PTSS policy to decide eligibility or alternatives to travel. The patient is notified of the outcome of their application, usually within a week.

Tick when complete

APPROVED



## Attendance

» The **PTSS Appointment Attendance Form (Form C)** needs to be filled out and signed by the specialist, or a representative, to confirm the patient's attendance at the appointment.

Tick when complete



STEP 3

## Booking

» Once the patient has their appointment date they should contact their local hospital or health facility about travel bookings.

Tick when complete



» **Note:** Patients booking their own travel or accommodation need to keep their tax invoices to claim their subsidy.



STEP 4

STEP 5

## Subsidy payment

Tick when complete

» To claim their subsidy payment, the patient needs to submit their signed **PTSS Appointment Attendance Form (Form C)**, along with any tax invoices from travel and accommodation bookings.

These documents can be submitted:

- » online at [www.health.qld.gov.au/ptss](http://www.health.qld.gov.au/ptss) or
- » at any Queensland public hospital or public health facility in person or via email, fax or post.

» Subsidy payment should be received within 30 business days of submitting all necessary and completed paperwork.



For more information on PTSS, including details on the process and contact details for Queensland Health facilities please visit [www.health.qld.gov.au/ptss](http://www.health.qld.gov.au/ptss) or call 13 HEALTH (13 43 25 84)\*.

\*If this number does not connect from your location please call 13 43 25 instead.