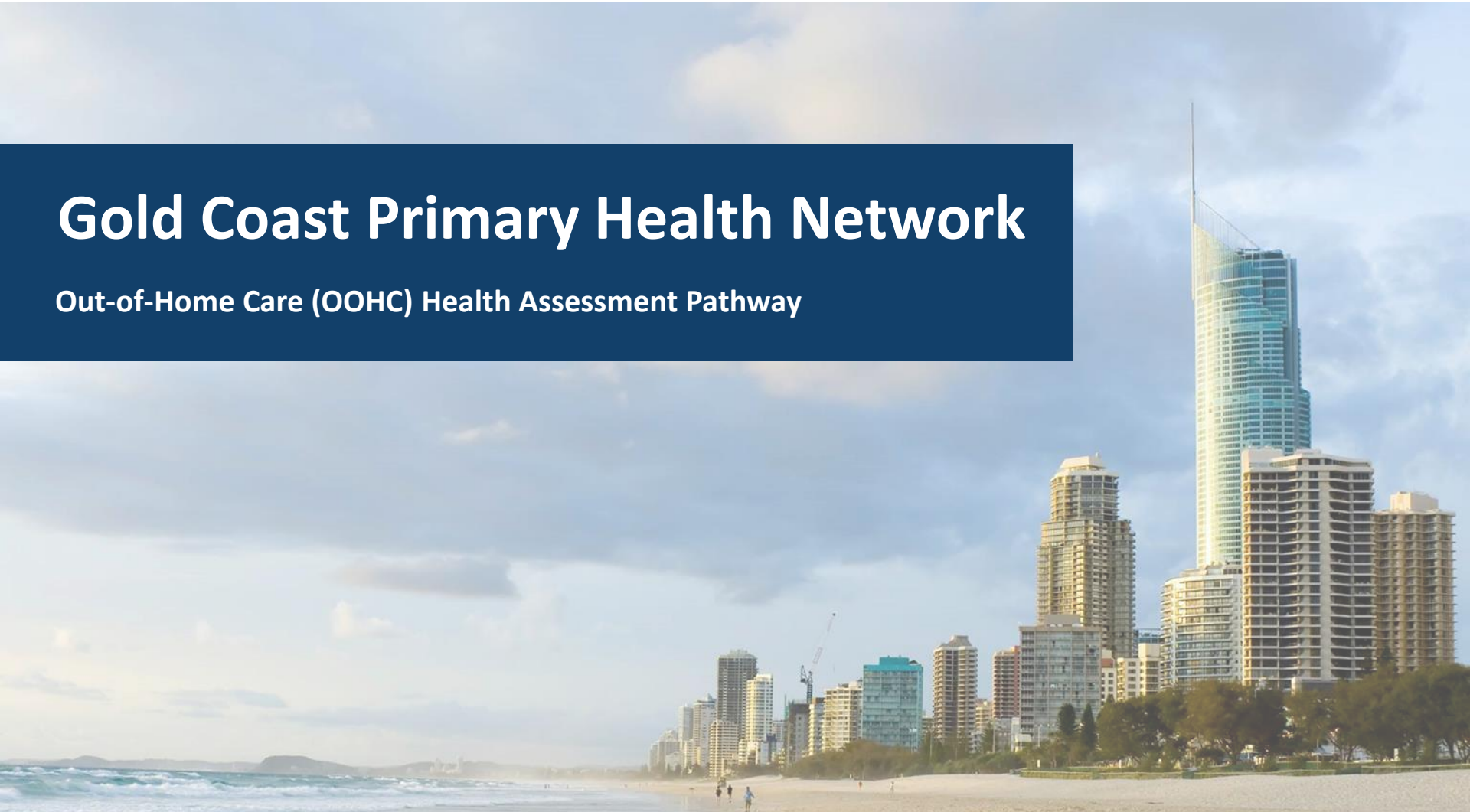




An Australian Government Initiative

Gold Coast Primary Health Network

Out-of-Home Care (OOHC) Health Assessment Pathway



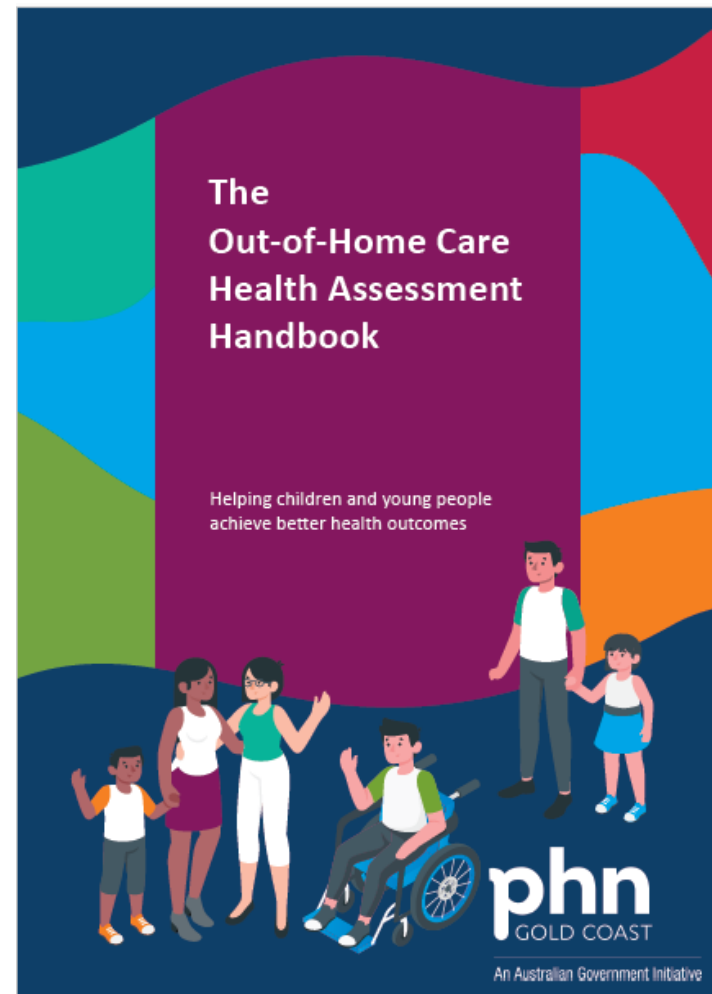
OOHC Health Assessment Pathway

Webpage and Resource Updates

1. OOHC Health Assessment Handbook

In order to better understand the OOHC Health Assessment Pathway, we have developed a downloadable and printable Handbook which describes the roles of those involved in the pathway, such as: the carer, GP, teacher, Child Safety Officer, etc.

More to follow in regard to production and distribution to GPs, General Practice, carers and carer agencies.



OOHC Health Assessment Pathway

Webpage and Resource Updates

2. GP User Guide

Provides general practice with a timeline of the pathway and information relevant to each stage. More to follow in regard to production and distribution to GPs and general practices.

OOHC Health Assessment Pathway - General Practice Guide

Within 30 Days	Within 90 Days	As Needed	6/12 Month
Preliminary Health Check and information gathering	Comprehensive Health and Developmental Assessment (CHDA) and Health Management Plan (HMP)	Targeted services for early intervention	CHDA and HMP
<p>Practice Manager to:</p> <ul style="list-style-type: none"> Upload Preliminary Health Check and Comprehensive Health and Developmental Assessment (CHDA) templates into practice software via GCPHN webpage - <i>Children and Young People in Out-of-Home Care (OOHC)</i> <p>Receptionist to:</p> <ul style="list-style-type: none"> Always ask if a child is in OOHC. Record answer in patient chart with Child Safety Officer (CSO) contact details, if applicable Book a 45 min appointment with GP for a Preliminary Health Check, time with a Practice Nurse, and ask carer to bring all medical documentation available: Child Information Form, proof of identity, authority to care; Medicare card; Child Health Passport, Strengths and Difficulties Questionnaire; Personal Health Record (red book) etc. Book next appointment (1hr) for a CHDA and Health Management Plan (HMP), and time with a Practice Nurse <p>Practice Nurse to:</p> <ul style="list-style-type: none"> Complete appropriate sections within the Preliminary Health Check 	<p>GP to:</p> <ul style="list-style-type: none"> Register for and Review Gold Coast Community HealthPathways webpage for assessment information Review the Letter to the Health Professional* and My Health Record, prior to appointment Review all health information provided by CSO/carers Flag child/young person as 'in OOHC' in practice software Complete Preliminary Health Check and provide to CSO and carer Include CSO and carer when sending recalls and reminders (ensure correct contact details are recorded) Upload shared health summary/event summary to My Health Record, as needed Ensure receptionist has booked in the next appointment (1hr) for a CHDA and HMP <p>Receptionist to:</p> <ul style="list-style-type: none"> On arrival, remind carer to book in again in 5mins (if child is <5yrs) or 12mins (if child/young person is ≥ 5yrs) for their next CHDA and HMP. Send recalls/reminders to CSO and carer <p>Practice Nurse to:</p> <ul style="list-style-type: none"> Complete appropriate sections within the CHDA to assist the GP <p>GP to:</p> <ul style="list-style-type: none"> Complete the CHDA and formulate a HMP for early intervention. Define the need for: <ul style="list-style-type: none"> referrals Team Care Arrangements (TCA) GP Management Plan (GPMP) Mental Health Treatment Plan (MHTP) paediatrics 	<p>GP to:</p> <ul style="list-style-type: none"> Upload shared health summary/event summary to My Health Record, as needed Book appointments or make referrals for: <ul style="list-style-type: none"> investigations immunisations preventative health checks (STI or CST) MHTP GPMP/TCA paediatrics other targeted services Share all referrals, CHDA and HMP with CSO and carer Ensure receptionist has booked a 1hr appointment for 6/12 month CHDA and HMP <p>GP to:</p> <ul style="list-style-type: none"> Review reports from targeted services, evaluate child/young person's progress and make any necessary referrals and future appointments. Remind carer to continue with regular dental checks and child health nurse checks 	<p>GP to:</p> <ul style="list-style-type: none"> Complete 6-month (if child is under 5-years of age) or 12-month CHDA and HMP Book next 6/12-month CHDA and HMP Dental review to occur every 6 months. Share CHDA and HMP with CSO. Upload shared health summary/event summary to My Health Record as needed



Adapted from Children in OOHC HealthPathway and National Clinical Assessment Framework

GP Practice Manager Practice Nurse Receptionist

* If available, this letter includes information about consent requirements for the child and young person in OOHC, from Child Safety.

This is an adapted version of a resource originally developed by Darling Downs and West Moreton PHN

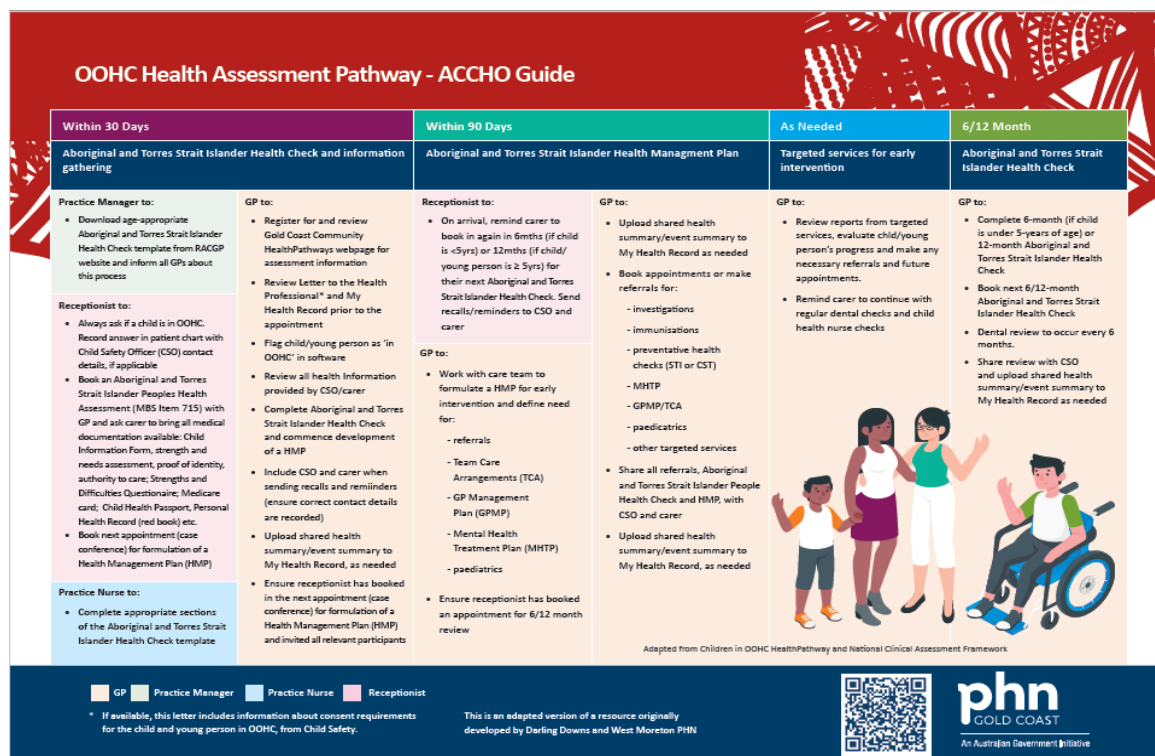


OOHC Health Assessment Pathway

Webpage and Resource Updates

3. ACCHO User Guide

Provides ACCHOs with a timeline of the pathway and information relevant to each stage. More to follow in regard to production and distribution to GPs and general practices.



OOHC Health Assessment Pathway

Webpage and Resource Updates

- GCPHN's "I work in Health Care" Children and Young People in OOHC webpage**
Updated with a greater focus on user-friendliness for general practice. Non mental health services list to be added soon.

General Practice

+ Gold Coast Health Services

The [Initial Assessment and Referral Decision Support Tool](#) (IAR-DST) provides a standardised, evidence-based approach to assist GPs in determining the most appropriate referral option to provide the best support for patients requiring mental health care.

[Head to Health Assessment and Referral Phone Service](#) provides initial clinical assessment (where required) and service navigation to connect people to the most appropriate mental health services. GPs can utilise this service for advice on which services are most suited, most cost efficient and have the shortest waiting periods.

[Early Childhood Approach](#) is an NDIS program for children younger than 7yrs with a disability or a developmental delay, and their families.

This [medical decision making guide](#) assists health professionals to determine who has the authority to provide consent for the health and medical treatment of children and young people subject to child protection orders and in OOHC. Please liaise with the child or young person's Child Safety Officer to seek further clarification if required.

The [General Practice Quality Improvement Toolkit](#) is a practical guide to improve care coordination and management of children and young people in care as a CQI activity and for PIP QI and CPD purposes.

If you require any additional support, please contact:

Gold Coast Health Liaison Officer
GoldCoastHLO@cyjma.qld.gov.au
0436 653 764

Resources developed to assist GPs and health care workers:



OOHC Health Assessment Pathway

Webpage and Resource Updates

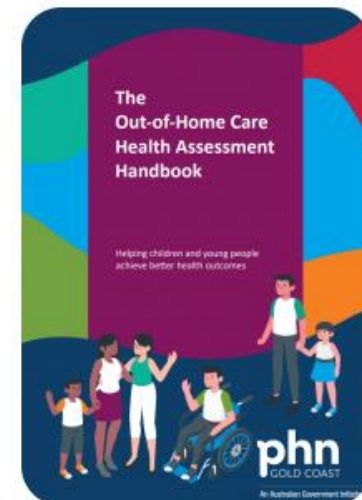
5. GCPHN's "I am a Community Member" Children and Young People in OOHC webpage

Greater focus on carer education of the pathway process and resources to assist them.

Children and Young People in Out-of-Home Care (OOHC)



Children and young people typically enter OOHC because they have experienced abuse or neglect and require a more protective and stable environment. They are more likely to have unrecognised and/or unmet complex health needs (poorer physical, mental, and developmental health), be socially and economically disadvantaged, and have very limited access to health resources.



OOHC Health Assessment Pathway

Webpage and Resource Updates

6. Gold Coast Community HealthPathways (update approved, not commenced)

Updates include:

- Addition of Aboriginal and Torres Strait Islander Health Check templates
- Additional information on the core elements of the pathway to align with the *National Clinical Assessment Framework for Children and Young People in Out-of-Home Care*
- Change all references from “in care” to “in out-of-home care” as per Queensland Government direction

The screenshot displays the Gold Coast Community HealthPathways website. The header includes the Gold Coast logo and a search bar. The left sidebar shows a navigation menu with categories like Home, COVID-19, About HealthPathways, Acute Care, Allied Health and Nursing, Child and Youth Health (selected), Normal Paediatric Observations, Acute Care - Child, Assault or Abuse - Child and Youth (selected), Abuse and Neglect of Children, and Children and Young People in Care (highlighted). The main content area shows the breadcrumb trail: Home / Child and Youth Health / Assault or Abuse - Child and Youth / Children and Young People in Care. The title is 'Children and Young People in Care'. Below the title, a paragraph states: 'This page is about assessing and managing infants, children, and adolescents in out-of-home care (OoHC)'. A 'Red flags' section lists two items: 'Abuse or neglect in the OoHC setting' and 'Suicidal ideation'. At the bottom, there is a 'Background' section with the text 'About children and young people in care' and a small icon.

Thank you

James Bailey

Senior Project Officer - Children in Out-of-Home Care and Special Projects

E: jamesb@gcphn.com.au

P: 07 5612 5473



An Australian Government Initiative

‘Building one world class health service for the Gold Coast

Level 1, 14 Edgewater Court Robina QLD 4226

www.gcphn.org.au

ABN: 47 152 953 092