

medicare

# Urgent Care Clinic

2 Leo Graham Way, Oxenford Qld 4210  
Open 8.00am to 10:00pm 7 Days

- ✓ Bulk-billed services.
- ✓ On-site parking.
- ✓ No appointments necessary.



## Primary Care

This is your regular, trusted doctor.

### Visit primary care for:

- 🩺 All non-life threatening health needs that can wait to be seen
- 🩺 Any noticeable changes in your general health and wellbeing, including your mental health
- 🩺 Annual exams, screenings and health checks
- 🩺 Immunisations
- 🩺 Earaches, coughs, colds, fevers and diarrhoea
- 🩺 Prenatal care
- 🩺 Chronic disease management
- 🩺 Muscle and joint pains

Contact your GP



## Urgent Care

Bulk-billed treatment for urgent conditions that aren't life threatening.

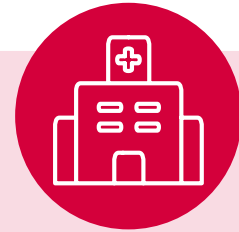
medicare

## Urgent Care Clinic

### Visit an urgent care service for:

- 🩺 Minor infections
- 🩺 Minor fractures, sprains and sports injuries
- 🩺 Back and neck pain
- 🩺 Pain when urinating (UTIs)
- 🩺 Stitches and glue for minor cuts
- 🩺 Insect bites and rashes
- 🩺 Minor eye and ear problems
- 🩺 Symptoms of respiratory illness, such as fever, cough, runny nose, sneezing, sore throat, headache or muscle ache
- 🩺 Symptoms of gastroenteritis, such as diarrhoea, vomiting, nausea or fever
- 🩺 Mild burns

Visit an Urgent Care Clinic



## Emergency Care

Emergency departments should be reserved for situations that could result in loss of life or limb if not treated immediately.

### Seek Emergency care for:

- 🩺 Severe allergic reaction (Anaphylaxis)
- 🩺 Chest pain
- 🩺 Warning signs of stroke, including altered sensation in face, arms and legs
- 🩺 Severe bleeding or bleeding that doesn't stop
- 🩺 Severe shortness of breath
- 🩺 Serious vehicle or industrial accidents
- 🩺 Poisoning
- 🩺 Complicated bone fractures
- 🩺 Major illness
- 🩺 Head injuries with loss of consciousness
- 🩺 Suicide attempts or thoughts

Go to nearest ED or call 000

The best place to go for care depends on the level of care you need.