

medicare

# Urgent Care Clinic

2 Leo Graham Way, Oxenford Qld 4210  
Open 8.00am to 10:00pm 7 Days

The best place to go for care depends  
on the level of care you need.



## Primary Care

This is your regular,  
trusted doctor.

Visit primary care for:

- All non-life threatening health needs that can wait to be seen
- Any noticeable changes in your general health and wellbeing, including your mental health
- Annual exams, screenings and health checks
- Immunisations
- Earaches, coughs, colds, fevers and diarrhoea
- Prenatal care
- Chronic disease management
- Muscle and joint pains

Contact your GP



## Urgent Care

Bulk-billed treatment for urgent  
conditions that aren't life threatening.

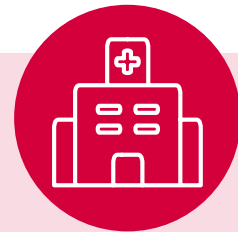
medicare

### Urgent Care Clinic

Visit an urgent care service for:

- Minor infections
- Minor fractures, sprains and sports injuries
- Back and neck pain
- Pain when urinating (UTIs)
- Stitches and glue for minor cuts
- Insect bites and rashes
- Minor eye and ear problems
- Symptoms of respiratory illness, such as fever, cough, runny nose, sneezing, sore throat, headache or muscle ache
- Symptoms of gastroenteritis, such as diarrhoea, vomiting, nausea or fever
- Mild burns

Visit an Urgent Care Clinic



## Emergency Care

Emergency departments should  
be reserved for situations that  
could result in loss of life or limb  
if not treated immediately.

Seek Emergency care for:

- Severe allergic reaction (Anaphylaxis)
- Chest pain
- Warning signs of stroke, including altered sensation in face, arms and legs
- Severe bleeding or bleeding that doesn't stop
- Severe shortness of breath
- Serious vehicle or industrial accidents
- Poisoning
- Complicated bone fractures
- Major illness
- Head injuries with loss of consciousness
- Suicide attempts or thoughts

Go to nearest ED or call 000

Bulk-billed services. No appointments necessary. On-site parking.