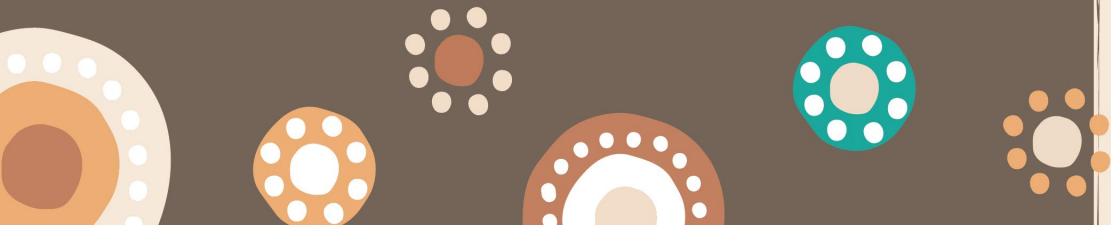


Strengthening Health Assessment Pathways for First Nations Kids in Out-of-Home Care

Jarryd Stanley - Kalwun Health and Wellbeing Services

Chantelle Howse - Gold Coast Primary Health Network



Supporting Minds – Children Out of home Care Program

- **Started:** April 2023
- **Aim:** Offers clinical care coordination to First Nations children in OOHC within Kalwun Health Services and psychological support to children in out-of-home care
- **Scope:** Provide 6 sessions of psychological therapy to kids aged 6-19 with mild to moderate mental health issues
- **Criteria:** Children have to be subjected to statutory order, not accessing NDIS supports (packaging or ECEI) and living in foster and kinship placements.
- **Additional:** Living on the Gold Coast or managed by a Gold Coast Child Safety Service Centre.

Content last updated 1/08/2023

Supporting Minds First Nation Kids in Out of Home Care

[Print this Page](#) 

Supporting Minds First Nation Kids in Out of Home Care

This moderate intensity program offers comprehensive support for Aboriginal and/or Torres Strait Islander young people aged 0-19 years, who are in a kinship or foster care arrangement who would like support with their social and emotional wellbeing.

DESCRIPTION

The Supporting Minds First Nations Kids in Out of Home Care offers short term short-term support, group programs, outreach, and case management using an integrated, flexible, and holistic approach to promote social and emotional wellbeing. The program provides tailored interventions for mental health and cultural needs and improve relationships and community connections.

INTENSITY

Moderate intensity service

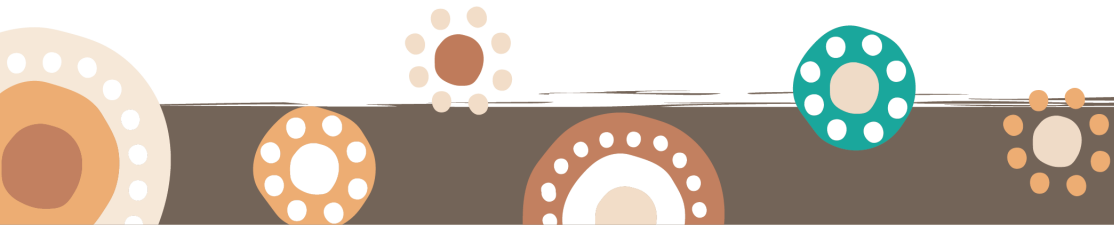
PROVIDER

Kalwun Health Service



Supporting Minds – Children Out of home Care Therapeutic Support

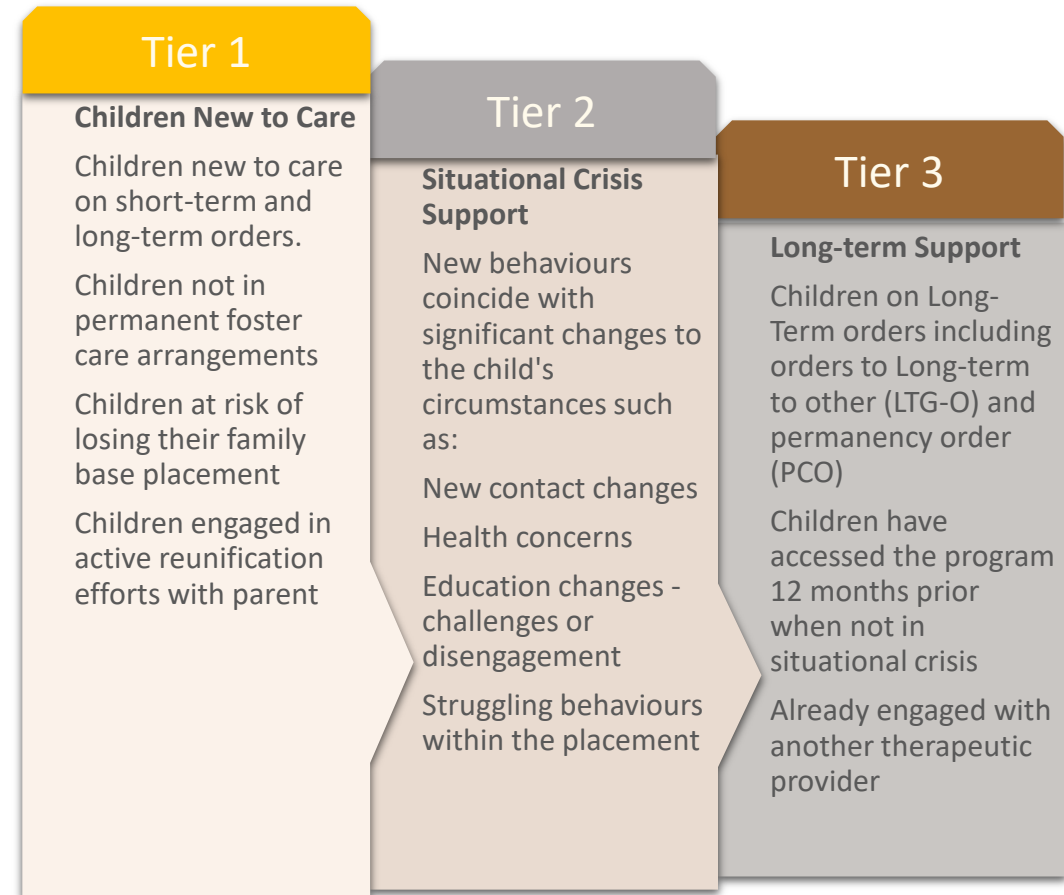
- Therapeutic intervention with young people discussion and play in one-on-one environment
 - Young person facilitated with goals and discussion
 - Giving them a space to feel heard and discuss their big feeling.
 - Big feels often changes in placement, contact or daily struggles of being a kid in care
- Group session/work have commenced in collaboration with Evolve Therapeutic Services
 - More of a drop-in service
 - Don't need to be a patient of ETS.
 - Allowing First Nations OOHC safe space for exploring engagement and service provision.
 - Focus on culture art, play, discussion and learning



Supporting Minds – Children Out of home Care Program

Clinical care coordination aims

- Provides central wrap-around support for child safety, carers, parents and children
- Coordinates care across all providers to improve health outcomes
- Improve young people's psychological, social and behavioral factors within chronic illnesses and promote health self-management
- No exclusion criteria but works within a tiered system
- Focuses on early intervention for 0-7 years and psychological intervention for older children
- Establishment of an urgent health assessment pathway for high-risk removals (used twice since 2021)



OOHC Pathway and Supporting Minds

Partnerships



Key Partnerships

Inner Circles

Child Safety Service Centers: and co-location at ongoing offices and investigation hubs. We are providing opportunistic health advice, liaison and cultural input to Child Safety Officers while attending.

GCUH Child Protection Unit: with Child Safety partnership we have developed new 'Child Health Consults' while co-locating at service centres. CPU nurse consultant also attends child safety to advise and support CSOs.

Evolve Therapeutic Service: quarterly case conferencing with QHealth Child Psychiatrist Consultant with IUIH Pediatric team and establishment of a child protection cultural group activity and yarning circle group

Urban Institute of Indigenous Health (IUIH) – Pediatrics Team: Working with pead team (Nurse, Speech, OT and Pediatrician who work with number of kids in care engaging in the clinics.

Outer Circles:

Wesley Mission: Supporting Minds (Situational crisis & LGTBIQ+ Programs) and Youth At Risk Alliance ('YARA') Complex Need Assessment Panels

First Nations child protection/youth justice quarterly community of practice form.

Child Youth Mental Health Services – Edlink: Quarterly meetings with school providers

Head to Health – Kids/Adult: Another avenue for patient access and support.

OOHC Pathway resources

- HLO continues to assist children access the pathway
- Changed and enhanced processes via new initiatives and child safety policies
- Resources available:
- Created several pathway and stakeholder initiatives with GP's and Kalwun Health
- Created Supporting Minds: First Nations Children out of home care program



2 x GCPHN webpages dedicated to Children and Young People in OOHC, to assist GPs and Health Professionals + carers and community members navigate the pathway

ACCHO Guide - Provides a timeline relevant to each staff members role.

OOHC Health Assessment Pathway - ACCHO Guide	Within 30 Days	Within 60 Days	As Needed	6-12 Months
Practice Manager to:	<ul style="list-style-type: none"> Develop sign-off agreement for OOHC Assessment pathway Book an Aboriginal and Torres Strait Islander Health Check for all OOHC clients Book an Aboriginal and Torres Strait Islander Health Check for all OOHC clients Book an Aboriginal and Torres Strait Islander Health Check for all OOHC clients Book an Aboriginal and Torres Strait Islander Health Check for all OOHC clients 	<ul style="list-style-type: none"> Register for OOHC Complete sign-off agreement for OOHC Assessment pathway Book an Aboriginal and Torres Strait Islander Health Check for all OOHC clients Book an Aboriginal and Torres Strait Islander Health Check for all OOHC clients Book an Aboriginal and Torres Strait Islander Health Check for all OOHC clients 	<ul style="list-style-type: none"> Book an Aboriginal and Torres Strait Islander Health Check for all OOHC clients Book an Aboriginal and Torres Strait Islander Health Check for all OOHC clients Book an Aboriginal and Torres Strait Islander Health Check for all OOHC clients Book an Aboriginal and Torres Strait Islander Health Check for all OOHC clients 	<ul style="list-style-type: none"> Book an Aboriginal and Torres Strait Islander Health Check for all OOHC clients Book an Aboriginal and Torres Strait Islander Health Check for all OOHC clients Book an Aboriginal and Torres Strait Islander Health Check for all OOHC clients Book an Aboriginal and Torres Strait Islander Health Check for all OOHC clients

General Practice Guide - Provides a timeline relevant to each staff members role.

OOHC Health Assessment Pathway - General Practice Guide	Within 30 Days	Within 60 Days	As Needed	6-12 Months
Practice Manager to:	<ul style="list-style-type: none"> Develop sign-off agreement for OOHC Assessment pathway Book an Aboriginal and Torres Strait Islander Health Check for all OOHC clients Book an Aboriginal and Torres Strait Islander Health Check for all OOHC clients Book an Aboriginal and Torres Strait Islander Health Check for all OOHC clients 	<ul style="list-style-type: none"> Register for OOHC Complete sign-off agreement for OOHC Assessment pathway Book an Aboriginal and Torres Strait Islander Health Check for all OOHC clients Book an Aboriginal and Torres Strait Islander Health Check for all OOHC clients 	<ul style="list-style-type: none"> Book an Aboriginal and Torres Strait Islander Health Check for all OOHC clients Book an Aboriginal and Torres Strait Islander Health Check for all OOHC clients Book an Aboriginal and Torres Strait Islander Health Check for all OOHC clients Book an Aboriginal and Torres Strait Islander Health Check for all OOHC clients 	<ul style="list-style-type: none"> Book an Aboriginal and Torres Strait Islander Health Check for all OOHC clients Book an Aboriginal and Torres Strait Islander Health Check for all OOHC clients Book an Aboriginal and Torres Strait Islander Health Check for all OOHC clients Book an Aboriginal and Torres Strait Islander Health Check for all OOHC clients

Quality Improvement Toolkit –Practice guide to improve care coordination of children and young people in OOHC



OOHC Health Assessment Handbook. Details all stakeholder's roles

Gold Coast Community HealthPathways -designed to assist general practice



Contents

- The journey 3
- I am a child or young person 4
- I am a parent 5
- I am a carer 6
- I am a teacher 10
- I am a kinship, foster or residential care agency 10
- I am an ACCHO GP or staff member 10
- I am a general practice GP or staff member 10
- I am a Child Safety Officer 10
- At the ACCHO (guide for all staff) 10
- At the general practice (guide for all staff) 10
- At the hospital (guide for all staff) 10
- Notes



Partnership Case Study

- Mother of 2 children identify to be aboriginal engaged with Child Safety under an investigation. Child safety wanted to explore service support and engagement to reduce the worries for the kids come into care. Children had significant behavioural and health needs had recently engaged with a health provider with limited support outside of health reviews and referral to child development unit.
- Child Safety Officer consult Health Liaison, Child Protection Unit Nurse Consultant and I regarding how we can support the family.
- CPU Nurse explored children file. Advised they were Cata 3 for CDS. Nurse found that the children were not identified on Qhealth system. This result in their referral being upgrade to Cata 2.
- SM Worker work with CSO to identify appropriate GP at Kalwun. Made an appointment during consult with CSO and obtain paperwork from CSO to create a file and confirm appointment on the spot with CSO.
- CSO worked with family to attend appointment and assist in linking family to CDS and Kalwun Health Services Paed team. Also, other referrals to Kalwun Family Support.
- Referral process aided in reducing Child Safety concerns resulting in the children not coming into care.

