

Meet your Practice Engagement Officers

Gold Coast Region



Deborah Barnes

Project Officer (Engagement and Digital Health)

Zone: Central (Broadbeach to Surfers Paradise and Tamborine)



Carolyne Gillies

Project Officer (Engagement and Digital Health)

Zone: North (Helensvale to Ormeau and Canungra)



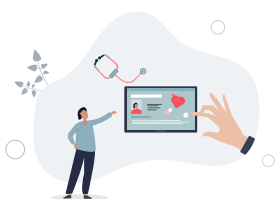
Rebecca Norris

Project Officer (Engagement and Digital Health)

Zone: South (Coolangatta to Mermaid Beach and Robina)

Gold Coast Primary Health Network (GCPHN) provides support to General Practice, the cornerstone of primary health care, to promote best practice methods and improved quality management. We provide a team of dedicated support officers ready to help answer your questions and are happy to come out to the practice or offer support over the phone. Depending on the support you require, we may connect you with a Primary Care Engagement Team member who specialise in digital health, quality improvement and development, Primary Sense or COVID-19 response. We also engage with local hospital services, other health care providers, and the community to enhance patient outcomes and reduce avoidable hospital admissions.

Our primary care engagement team can provide support in the following areas:



Digital Health



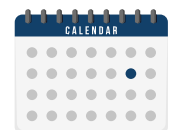
General support for practices



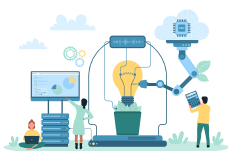
MyMedicare



Resources to support patient care



Training Events



Quality Improvement



Primary Sense



Clinical Placements



Latest Updates



Finding Local Health Services

P: 07 5612 5408 | E: practicesupport@gcphn.com.au

W: www.gcphn.org.au | F: 07 5635 2466

"Building one world class health system for the Gold Coast"



phn
GOLD COAST

An Australian Government Initiative