



Australian Government

NATIONAL
CANCER
SCREENING
REGISTER

ACCESS TO SCREENING INFORMATION

JOHN LEE
HEAD OF ENGAGEMENT AND COMMUNICATIONS



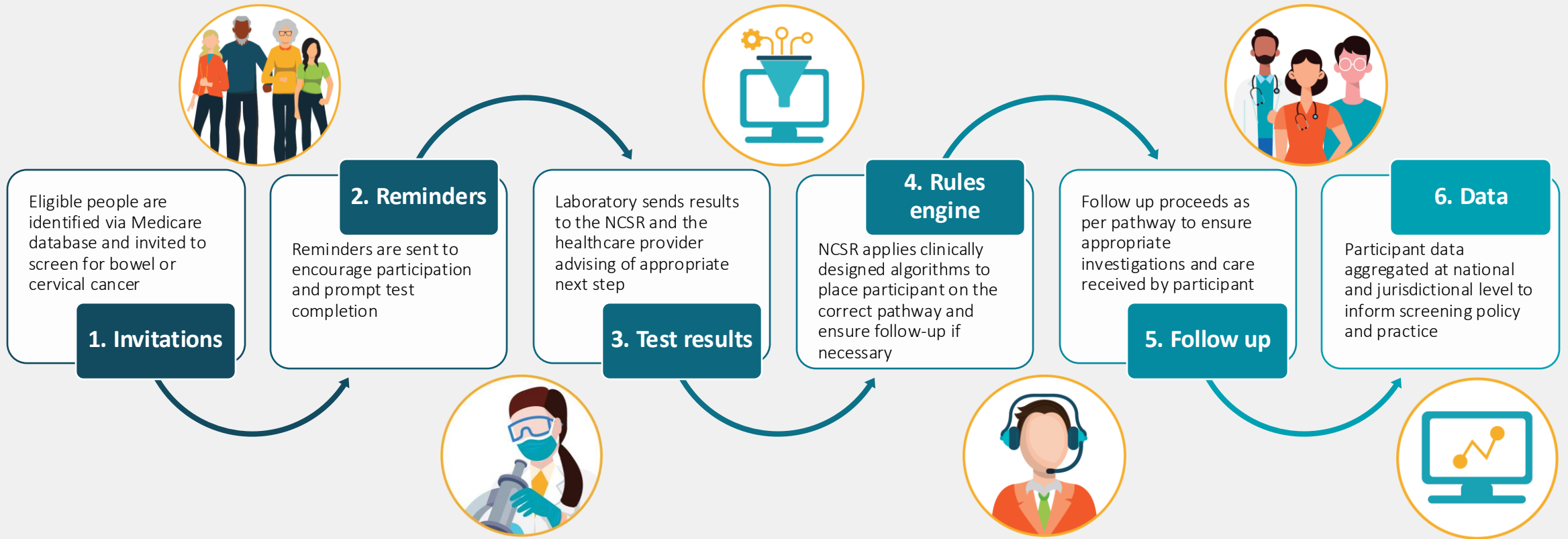
Australian Government

NATIONAL
CANCER
SCREENING
REGISTER



The National Cancer Screening Register (NCSR) is a digital platform developed to underpin the Australian Government's National Cervical Screening Program and National Bowel Cancer Screening Program.

PARTICIPANT DATA FLOW





Australian Government

NATIONAL
CANCER
SCREENING
REGISTER

DIGITAL CHANNELS FOR HEALTHCARE PROVIDERS

- Healthcare Provider Portal
- **Clinical Software Integration** (Generic API, presently integrated with MedicalDirector Clinical, Best Practice Premier, Communicare with plans to onboard other GP and Specialist software)



Access your patient's bowel and cervical screening results and histories online
View next screening action



Submit program forms electronically



Manage patient's details and preferences



Order Bowel Screening Test Kits



Accessed via PRODA or integrated clinical software

NCSR DIGITAL SUMMARY



27K

HEALTHCARE PROVIDERS
& DELEGATES



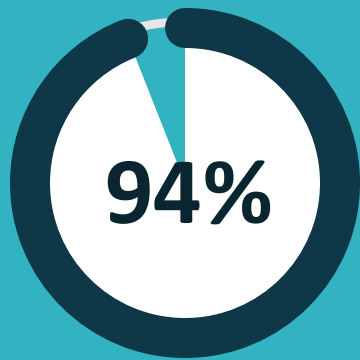
3.2k

REGISTERED
PRACTICES



83K

REGISTERED
PARTICIPANTS



REDUCTION IN FAXED
SCREENING HISTORY REQUESTS



CERVICAL SCREENING HISTORIES



PATHOLOGY LABORATORIES
CONNECTED DIGITALLY

ELEMENTS REQUIRED FOR SUCCESSFUL ACCESS

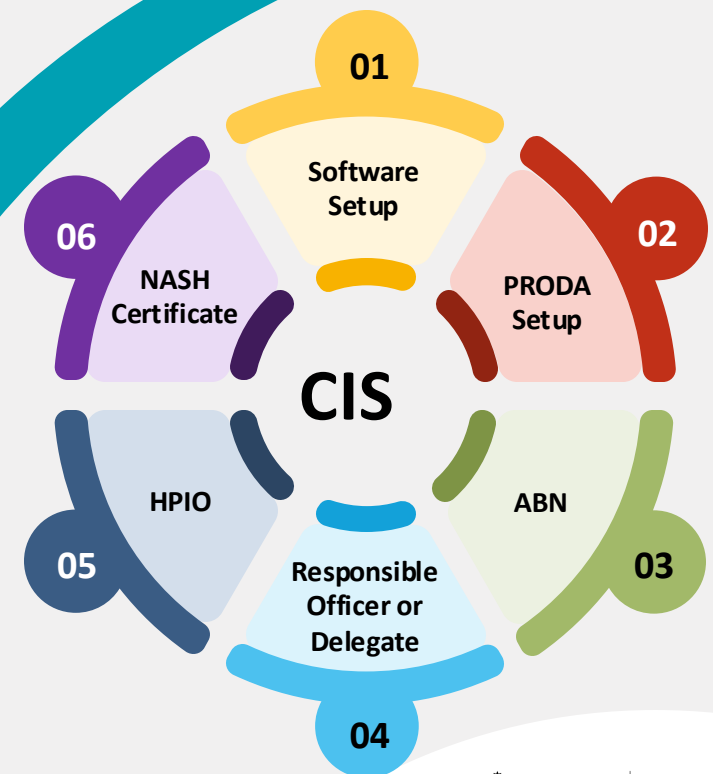
Successful access to NCSR via CIS Integration

Software

- Best Practice
- Medical Director
- Communicare
- **PRODA** – Provider Digital Access
- Organisation
 - **ABN** – Australian Business Register
 - Responsible officer or delegate

HPOS (Health Professional Online Services)

- **HPI-O** – Health Provider Identifier – Organisation
- **NASH** Certificate





Australian Government

NATIONAL
CANCER
SCREENING
REGISTER

Clinical information system registration guide

PART 5: Registering your organisation in the Healthcare Provider Portal

User Guides and Support Materials

Support materials have been developed to assist healthcare providers and pathologists to access and navigate the Healthcare Provider Portal and find out more about integration with clinical software.



**Healthcare Provider Portal
Walk-Through Video**

 [View video](#)



**Healthcare Provider
Portal User Guide**

 [Visit webpage](#)



**Healthcare Provider
Portal Quick Start Guide**

 [View guide](#)



**Clinical Software
Integration Updates**

 [Visit webpage](#)

 [Book a call back](#)