

Bowel Cancer Screening Project (Research and QI opportunity)

Michelle Everington
Clinical Trial Coordinator

Background – Bowel Cancer

- 4th most commonly diagnosed cancer in Australia
- 3rd most common cancer worldwide
- 2nd most deadly cancer in Australia
- Develops without early signs or symptoms
- **9 out of 10** bowel cancers can be **successfully treated** through early detection
- Screening is an effective method to detect bowel cancer early

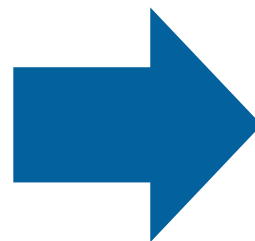


Background – National Bowel Cancer Screening Program

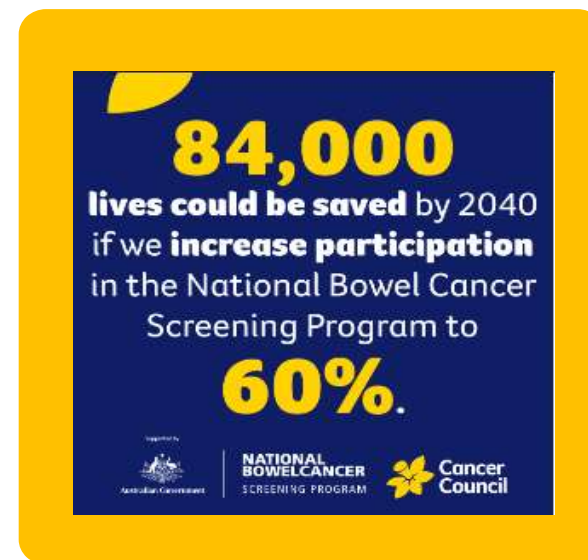
- Aim: reduce deaths from bowel cancer due to early detection
- One of the most life-saving public health programs in Australia
- Eligibility: 45 – 74 years
- Immunochemical faecal occult blood test (iFOBT) detects blood in stool
- National Cancer Screening Register (NCSR) tracks and monitors patients



Participation – National Bowel Cancer Screening Program



Modelling estimates that...



How do we get to 60%?

Bowel Cancer Screening Project (MAIL, GP & SCALE trial)



Pilot intervention aimed to:

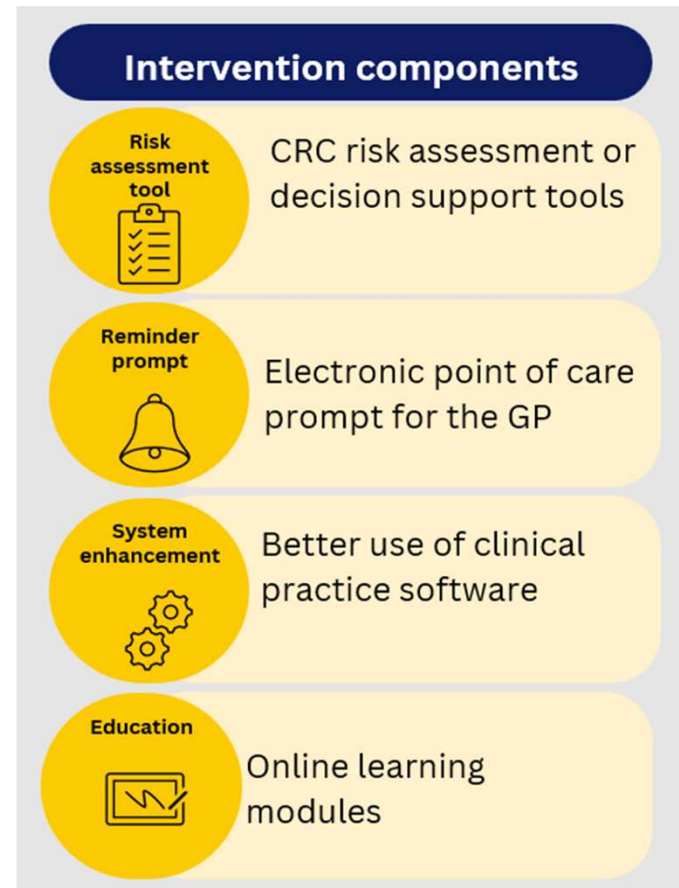
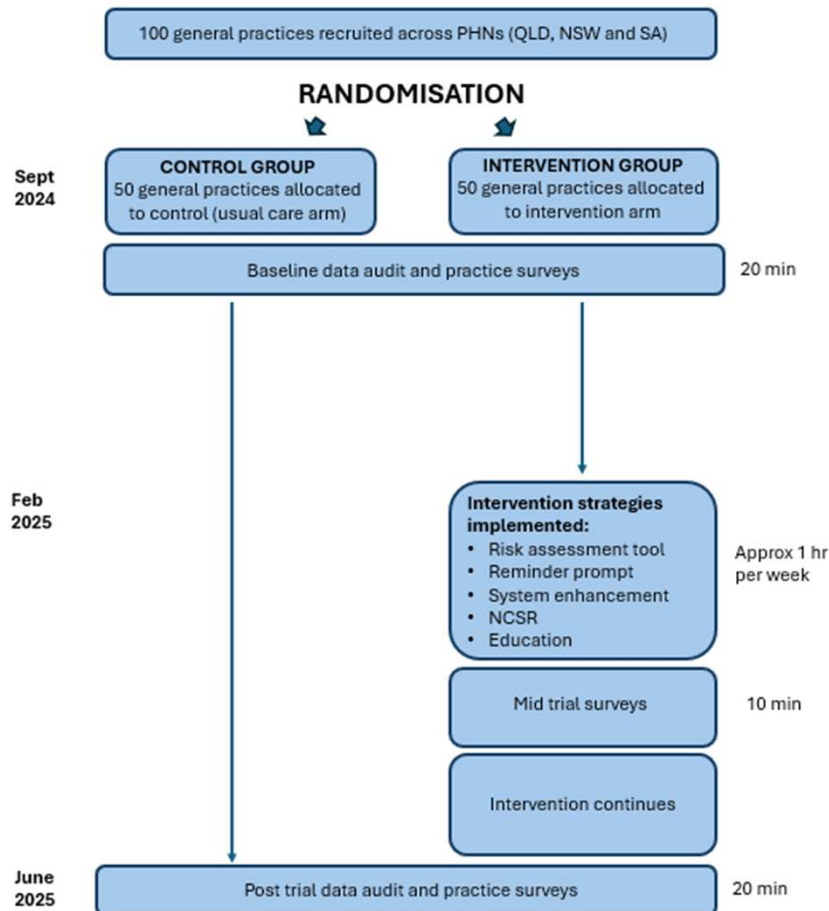
- Increase involvement of general practice in promoting the National Bowel Cancer Screening Program.
- To ensure patients undergo bowel cancer screening in line with clinical guidelines.

The Daffodil Centre



Understanding what works best to support bowel cancer screening

What's involved?





Benefits

- \$2000 incentive practice payment
- Improving patient health outcomes - reduce deaths from bowel cancer due to early detection!
- CPD hours
- Dedicated support
- Enhance practice capabilities whilst also meeting PIPQI and accreditation requirements

Requirements

Inclusion criteria:

- ✓ Commit to the trial period of September 2024 – May 2025.
- ✓ Interest in bowel cancer screening.
- ✓ At least two GPs (2 FTE) willing to participate.
- ✓ Nominated Practice Champion who is willing and able to liaise with the Clinical Trial Coordinator (CTC).
- ✓ Use of Best Practice or MedicalDirector as the Clinical Information System (CIS).
- ✓ Primary Sense (population management and clinical audit tool) installed and shares de-identified data with GCPHN.
- ✓ Practice **cannot** share a server with another practice.
- ✓ Windows 10 or higher, i5/i7 16GB processing or willing to upgrade.
- ✓ 1000 or more active patients and sees minimum of 35 adult patients per day.

What's next

Let me know if you are interested or need further information.

Phone or email Michelle on 5612 5478 or via michellee@gcphn.com.au.

I'll you send consent to participate forms



**Express your
interest here**



Questions