



An Australian Government Initiative

Gold Coast Primary Health Network CLINICAL PLACEMENTS

Invitation to host Medical and Nursing Students



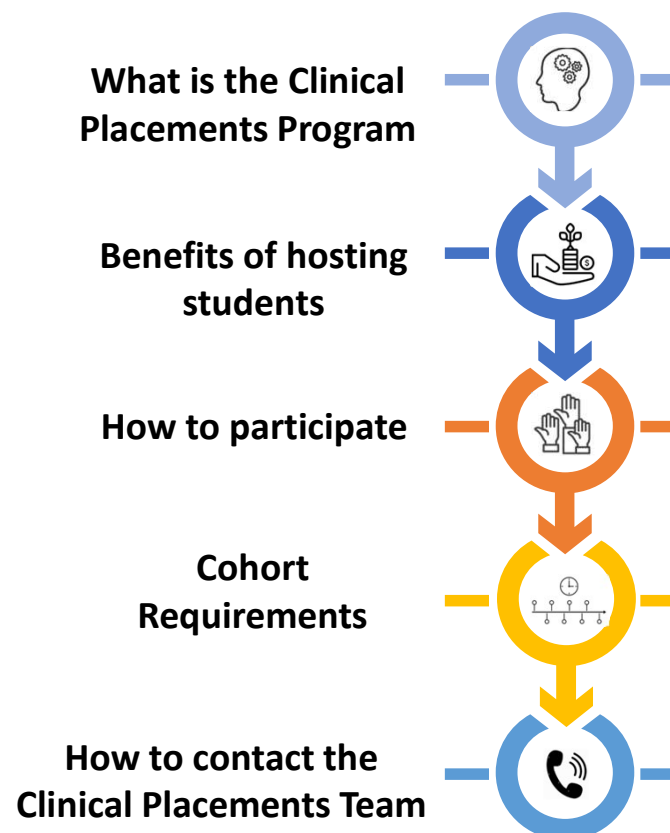
Presentation Overview

Thank you

to all current participating practices for the ongoing support of the Medical and Nursing Student Programs.

Whether you have been supporting the program for years or are in the process of exploring what hosting Medical or Nursing students may look like for you and your practice this presentation will step you through the requirements, benefits and how you can participate in 2025.

In this presentation we will explore...



What is the Clinical Placements Program?

phn
GOLD COAST

An Australian Government Initiative

phn
GOLD COAST

An Australian Government Initiative



Joint initiative between Gold Coast Primary Health Network (GCPHN) and:

- **For Medical Placements:** Bond University and Griffith University
- **For Nursing Placements:** Griffith School of Nursing and Midwifery and Southern Cross University

GCPHN acts as an intermediary organisation to coordinate medical and nursing students

GCPHN supports participating General Practices and students to provide a seamless and quality experience for all

Medical Student Placement Program



Medical Placements Program: Benefits



GPs who have hosted medical students as part of the GCPHN Medical Placements Program find it not only rewarding but key to:

- Creating a greater awareness of general practice as both a lifestyle and a career for medical students
- Connecting medical students to the general practice community
- Providing a network for medical students interested in general practice to optimise exposure to general practice



Students benefit from placement

Clinical placements provide the student with the opportunity to learn and observe the following responsibilities that GPs undertake:

- Diagnosing and treating common medical conditions
- Family planning and reproductive health
- Referrals and coordination
- Chronic disease management
- Mental Health Support
- Minor procedures
- Continuity of care
- Preventative care



The GP supervisor plays a crucial role

Clinical Placements are an integral part of a medical student's curriculum. Clinical placements in general practice are crucial for building competence and confidence in future healthcare practitioners.



Incentive

Services Australia offer a PIP teaching payment incentive to supervise students.



Medical Placements Program: Insight



Medical Placements Program: 2025 Cohort Requirements



Griffith Introductory Years 1 & 2 Placements

3-week placement – 1 day per week (min 2 sessions per day, 3 hours per session)

Griffith Final Year

7-week placement – 2 days per week (min 4 sessions per week, 3 hours per session – 28 sessions)

Griffith Final Year Elective Placements

7-week placement – 4 days per week (min 8 sessions per week, 3 hours per session – 56 sessions)



Bond Year 3 Placements

3-week placement – 1 day per week (min 2 sessions per day, 3 hours per session)

Bond Final Year Placements

7-week placement – 2 days per week (min 4 sessions per week, 3 hours per session – 28 sessions)

Bond Final Year Elective Placements

7-week placement – 4 days per week (min 8 sessions per week, 3 hours per session – 56 sessions)

Medical Placements Program: Testimonials

From the GP

“As GPs, we never stop learning. Teaching and supervising medical students helps to maintain the learning culture and stimulates discussion not only with students about diagnosis and management but with the whole practice team.

By instilling a positive role model for general practice, our students can be encouraged to consider General Practice as a rewarding career choice, and if you are lucky as we have been, your students can return as GP registrars and then stay post fellowship.”

– **Dr Andrew Weissenberger**
M.B.B.S. (Hons), F.R.A.C.G.P.



From the Student

“With supportive staff, and not just including the doctors, I was made to feel at home and confident in my ability to provide good quality health care. To see how a General Practice can be run successfully and feel part of the team that makes it do so has given me the passion for general practice that makes me feel inspired to go to work.

Dr Andrew Weissenberger took me under his wing from when I was a medical student, and I am so very happy that now I can contribute back to the practice as a fellow of the RACGP. The clinical placements program being run for Medical Students and Training Doctors is integral in shaping the future General Practice workforce as hopefully it inspires the next generation of GPs.”



Nursing Student Placement Program

Nursing Placements Program: Benefits



RN's hosting nursing students have reflected that it is a very rewarding experience as it is:

- Supporting a student's progression and giving back to the Nursing profession.
- Invigorating for themselves due to a student's enthusiasm.



GP Clinical Placements for undergraduate nursing students provide students the opportunity to work in real healthcare settings, under the supervision of qualified Registered Nurse Preceptors. The aim is to give students hands-on experience and exposure to real patient care, allowing them to apply their theoretical knowledge in a practical setting and develop essential clinical skills.



Incentive - The Universities provide a payment incentive to supervise students for the duration of the placement.



Nursing Placements Program: Testimonials

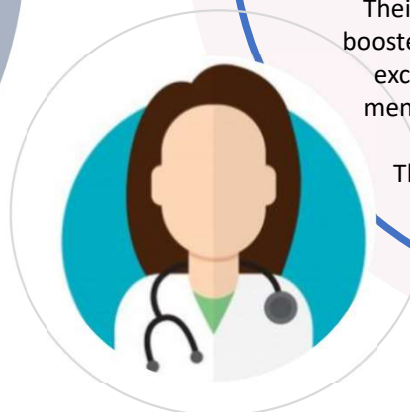
Feedback received has consistently shown that students consider their GP clinical placement to be one of the most enjoyable, useful, and influential experiences of the nursing program.

Year 2 Undergraduate Nurse

“My RN Preceptor was not only genuinely nice but also incredibly supportive throughout my placement. Their constant encouragement and guidance played a pivotal role in fostering my learning and professional development.

They took the time to explain complex concepts, patiently answered my questions, and provided constructive feedback, creating a positive and nurturing environment. Their unwavering support and belief in my abilities boosted my confidence and motivated me to strive for excellence in my role. I am truly grateful for their mentorship and the impact they had on my overall experience.

Thank you for supporting and believing me !”



Nursing Placements Program: 2025 Cohort Requirements



Griffith University Year 2 & 3 Nursing students undertake 2-to-4-week placements with learning focused on a variety of areas including:

- Community Nursing
- Clinical Decision Making
- Acute Medical and Surgical

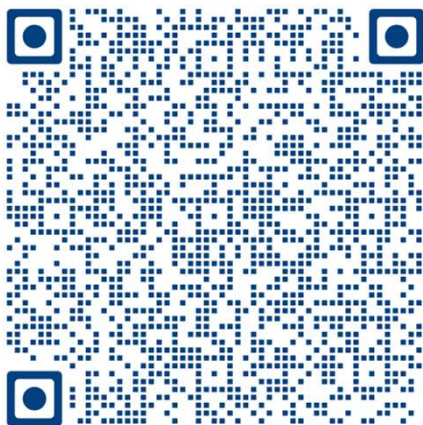


Southern Cross University Masters, 2 & 3 Nursing students undertake 3-week placements with learning focused on a variety of areas including:

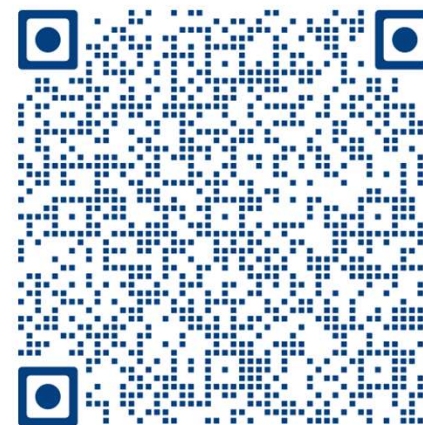
- Chronic Health
- Building healthy Communities
- Nurse Practice

How to Participate

**Recruitment for the Medical and Nursing
Placement Programs are underway for 2025**



**RSVP for
Medical**



**RSVP for
Nursing**

Contact and Support

Please contact our friendly team with any questions or concerns you have about the program before, during or after placement, we are here to help.

 **Phone:** 07 5612 5474

 **Email:** clinicalplacements@gcphn.com.au

The GCPHN Clinical Placements website provides valuable resources and answers many questions about Clinical Placements, so make sure to **bookmark us**.

