



Bond University Health and Wellness Clinic (BUHAWC)

- Introduction
- Overview of BUHAWC
- Services Offering
- Accessing Services
- Benefits to the Community
- Success Stories



Introduction

The Bond University Health and Wellness Clinic (BUHAWC) is a specialised teaching and training facility where Allied Health students gain practical experience through internships. These are conducted under the direct supervision of fully qualified and accredited health professionals, alongside academic experts.

Our Commitment: BUHAWC is dedicated to provide a range of preventative, therapeutic and rehabilitative services, including **Psychology, Physiotherapy, Occupational Therapy, Nutrition & Dietetics, and Exercise & Sports Science.**

Mission and Vision:

As Australia's first private non-profit university, Bond University aims to be a global leader in education. We foster innovation and inspire future professionals through transformative student experiences.

The Bond University Health and Wellness Clinic (BUHAWC) focuses on delivering high-quality, accessible, and affordable health services. Our mission is to serve the public while offering students hands-on clinical practice opportunities. Through evidence-based care, students work under the guidance of qualified clinicians and academic experts.

Our Approach:

We emphasise a holistic model that encourages collaboration between students and clients in setting realistic management goals. By bridging the gap in affordable health services, BUHAWC ensures safe and consistent care for all ages.

In our supportive learning environment, clinical educators uphold the highest ethical standards in rehabilitation. Our state-of-the-art facility is committed to enhancing the well-being of the community we serve.

Overview of BUHAWC

Bond University Health and Wellness Clinic (BUHAWC) is a specialised teaching and training facility where our Allied Health students undertake practical internships under the direct supervision of fully-qualified and accredited health professionals, as well as academic experts.

BUHAWC is committed to offering a range of preventative, therapeutic and rehabilitative services, including **Psychology, Physiotherapy, Occupational Therapy, Nutrition & Dietetics, and Exercise & Sports Science.**

At BUHAWC the services are:

Multidisciplinary

Focus on prevention, education and contributing to the improvement of community health.

Provides a high-quality, safe, evidence-based Allied Health education experience.

Strengthens healthcare infrastructure:

- Identifying and addressing gaps;
- Alleviating systemic pressures.

Ensure affordability and accessibility of services.

Overview of BUHAWC

Daily Operation:



MONDAY TO FRIDAY



STAFF AND
STUDENTS:
8:30 AM TO 5:00 PM



FIRST APPOINTMENT
9:00 AM



LAST APPOINTMENT
4:00 PM



*Individual
Consultation:*
\$30.00



*Subsequent
Consultation:*
\$30.00



*Group-based
Session: \$15.00*



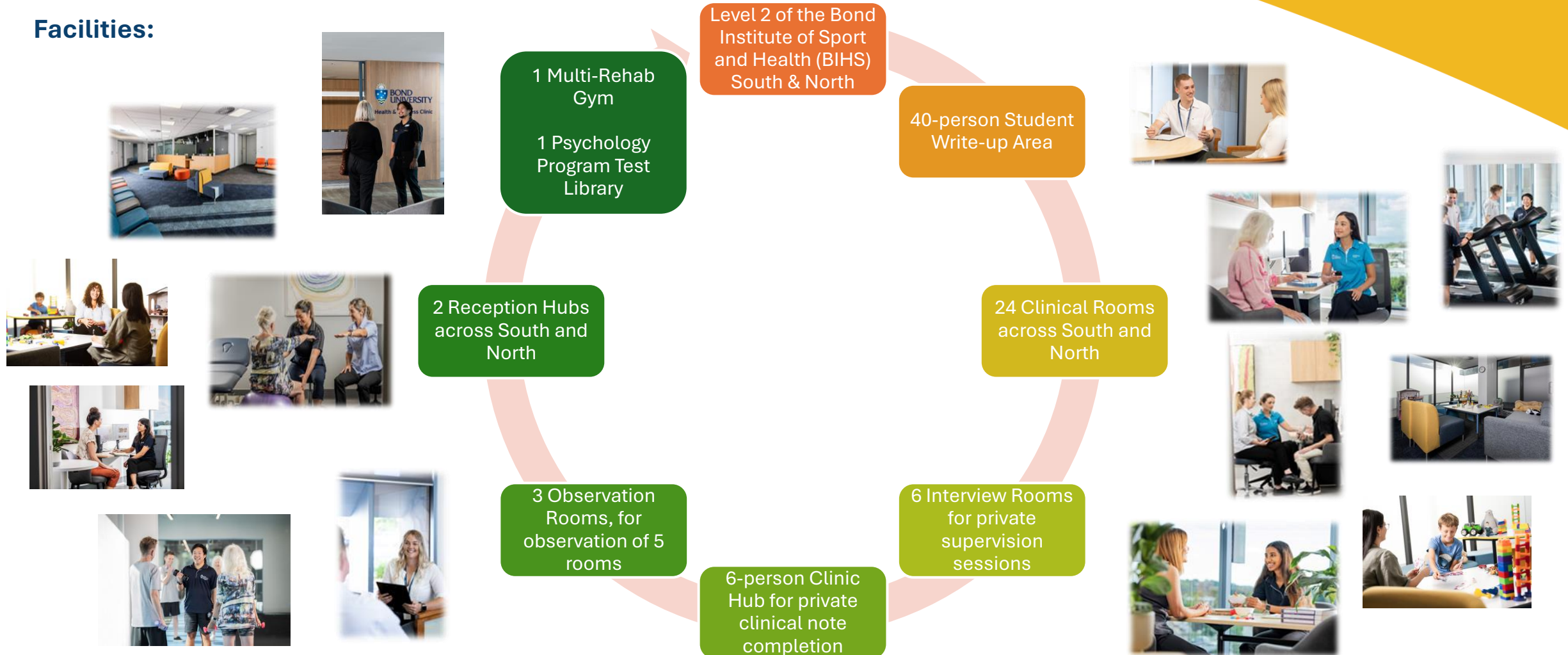
*Psychology
Assessment Pack:*
\$400.00



Free Parking on site

Overview of BUHAWC

Facilities:



Services Offering

Key Services Provided

➤ Psychology

- ❖ Therapy Sessions
- ❖ Diagnostic Assessment

➤ Physiotherapy

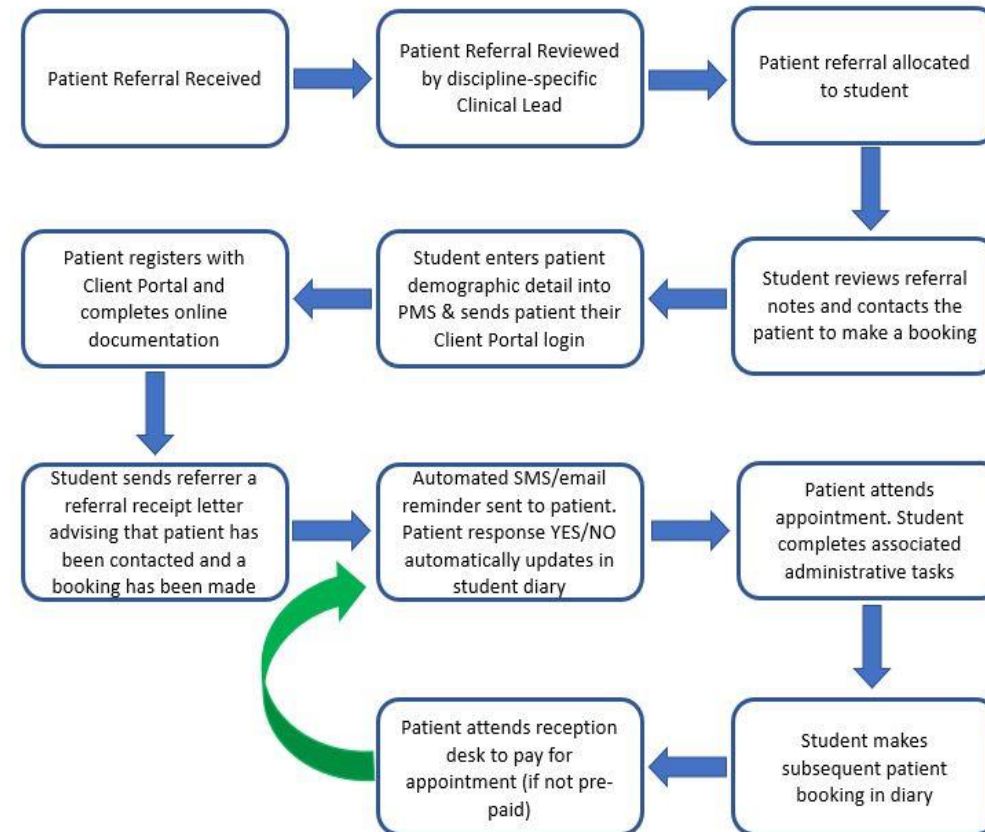
- ❖ Sports Injuries and Musculoskeletal Injuries
- ❖ Restore Movement and Physical Function
- ❖ Chronic Pain
- ❖ Neurological Rehabilitation

➤ Occupational Therapy

- ❖ Hand Arteritis
- ❖ Healthy Aging Program (BUnyAH Program)

➤ Nutrition & Dietetics

- ❖ Personalised Nutrition Counselling
- ❖ Nutrition Education
- ❖ Sports Nutrition



Accessing Services

Referrals:

While referrals from health practitioners are welcome, they are not required for most services. Patients can self-refer, with the exception of Hand Arteritis, which requires a referral from a GP or specialist.

Referral Submission:

Referrals can be submitted via **email** or through **MedicalObjects**.

Inquiries:

For any booking inquiries, questions, or further information, please contact the clinic by phone or email.

- **Phone:** (07) 5595 3500
- **Email:** MyHealth@bond.edu.au
- **Website:** bond.edu.au/BUHAWC

Location:

The Bond University Health and Wellness Clinic is conveniently situated on **Level 2 of the Bond Institute of Health and Sport (BIHS), located at 2 Promethean Way, Robina QLD 4226.**

** Please note that there are no Medicare or health insurance rebates available.*



Benefits to the Community

We are committed to identifying and addressing specific service gaps in the healthcare system with the overarching goal of strengthening overall healthcare infrastructure, alleviating systemic pressures, and improving health outcomes for the community.

➤ **Holistic and Multidisciplinary Approach:**

Integrating various health disciplines to provide comprehensive care for all clients.

➤ **Community Contributions and Integration of Academic Knowledge:**

Utilising research and student knowledge to improve service delivery and community health.

➤ **Advanced Technology and Equipment:**

BUHAWC is equipped with the latest technology to enhance diagnostic and treatment capabilities.

➤ **Positive Health Contributions and Student Learning Opportunities:**

Our services not only improve community health but also provide invaluable practical experience for students, fostering the next generation of health professionals.

Success Stories

"...It's been a blessing for me as I was guided toward the "Energies" omitting from the wonderful people for our 'ageing' population evolving here on our sunny Gold Coast. I was drawn into an eclectic group of Souls who had responded to encouragement from the warm & caring words from all whom have had the pleasure of knowing you, we now send our greatest thanks & gratitude. These have been the BEST 3 months I could ever had hoped to wish for at this particular time of my life..."





bond.edu.au

Sherin Chamanmah

Manager - Health Clinics

Faculty of Health Sciences and Medicine

Bond University, Gold Coast, Australia