



Australian Government

NATIONAL  
**CANCER  
SCREENING**  
REGISTER

# ACCESS TO PATIENT SCREENING DATA

**JOHN LEE**

Head of Engagement and Communication

October 2023



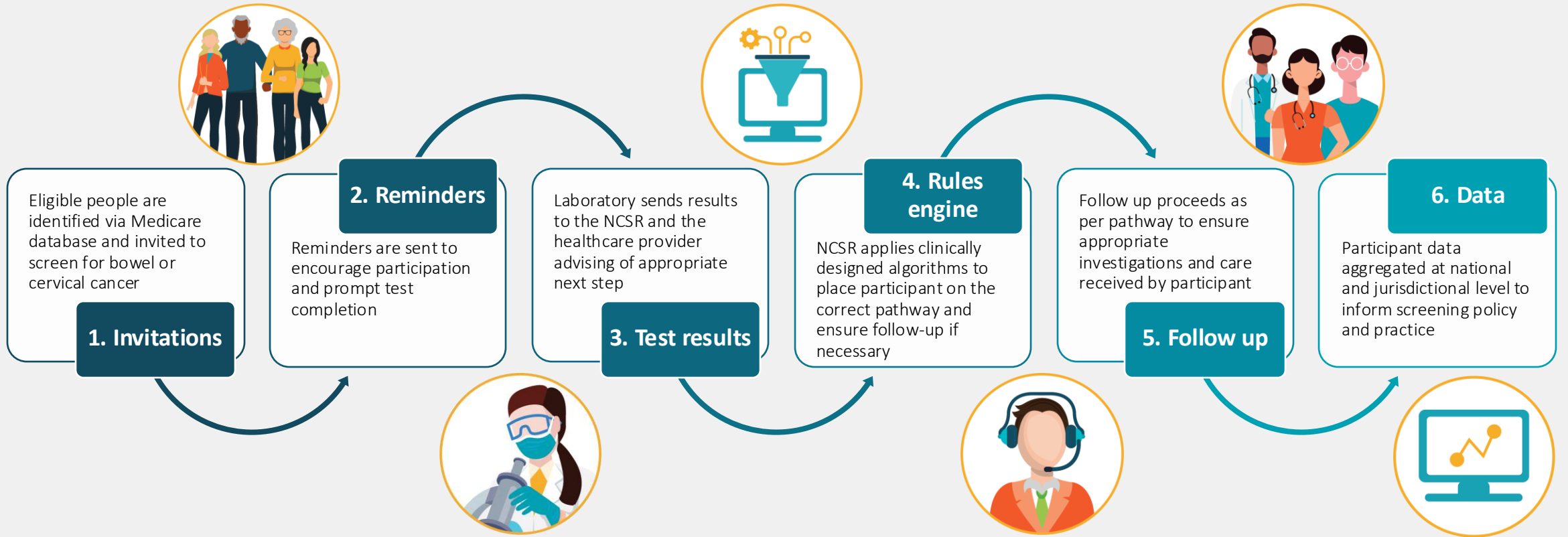
Australian Government

NATIONAL  
CANCER  
SCREENING  
REGISTER



The National Cancer Screening Register (NCSR) is a digital platform developed to underpin the Australian Government's National Cervical Screening Program and National Bowel Cancer Screening Program.

# PARTICIPANT DATA FLOW





Australian Government

NATIONAL  
CANCER  
SCREENING  
REGISTER

## DIGITAL CHANNELS FOR HEALTHCARE PROVIDERS

- Healthcare Provider Portal
- Clinical Software Integration (Generic API, presently integrated with MedicalDirector Clinical, Best Practice Premier, Communicare with plans to onboard other GP and Specialist software)



Access your patient's bowel and cervical screening results and histories online  
View next screening action



Submit program forms electronically



Manage patient's details and preferences



Order and issue Bowel Screening Test Kits



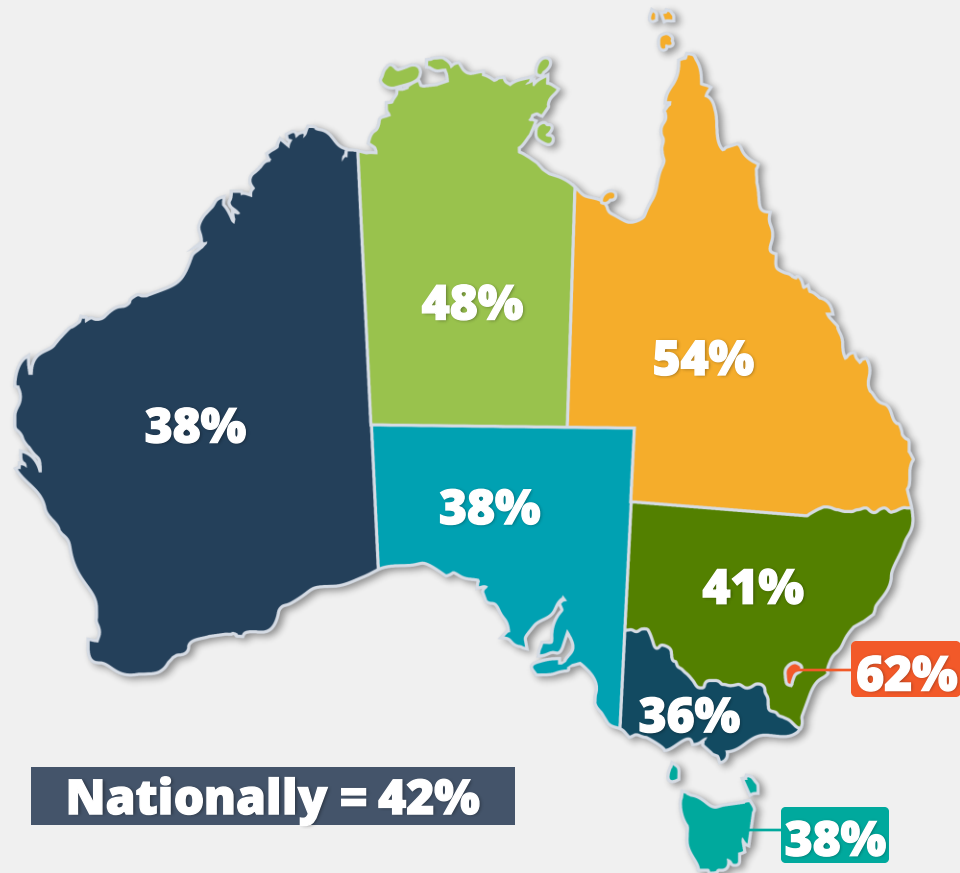
Accessed via PRODA or integrated clinical software



Australian Government

NATIONAL  
CANCER  
SCREENING  
REGISTER

## DIGITAL ACCESS FOR HEALTHCARE PROVIDERS



Over  
**3,500**  
practices  
have integrated

**22%**  
increase in digitally  
submitted data from  
clinicians in the  
last 6 months

**91%**  
of cervical screening  
histories are now  
accessed digitally

**94%**  
decrease in  
faxed screening  
history requests

# ELEMENTS REQUIRED FOR SUCCESSFUL ACCESS

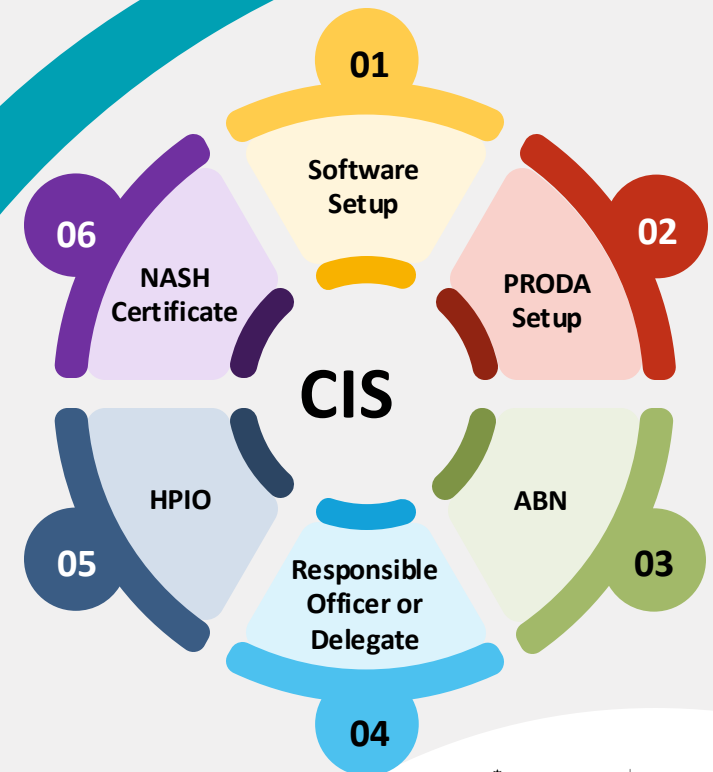
Successful access to NCSR via CIS Integration

## Software

- Best Practice
- Medical Director
- Communicare
- **PRODA** account – Provider Digital Access
- **Registered your HPI-O** – Health Provider Identifier – Organisation
- **ABN** – Australian Business Register
- Add NCSR as a service provider in PRODA
- Responsible officer or delegate

**HPOS** (Health Professional Online Services)

- **NASH** Certificate



# User Guides and Support Materials

Support materials have been developed to assist healthcare providers integrate their clinical software with the NCSR



**CIS Registration  
Walkthrough**

 [View videos](#)



**CIS User Guide**

 [Visit guide](#)



**Onboarding toolkit**

 [Download kit](#)



**Clinical Software  
Integration Updates**

 [Visit webpage](#)

 [Book a call back](#)