

# Immunisation update and Cold Chain Management for Practice Managers

Fiona Vosti  
Public Health Nurse  
Gold Coast Public Health Unit



Acknowledgment and thanks to Bree Cullen for assistance with the development of this presentation



Jingeri.

We acknowledge the Traditional Custodians of the land in which we work, live and grow, the Kombumerri, Wangerriburra, Bullongin, Minjungbal and Birinburra peoples, of the Yugambeh Language speaking nation. We also pay our respects to Elders past, present and emerging. We also acknowledge other Aboriginal and Torres Strait Islander people present today.



# Gold Coast Public Health Unit (GCPHU) Overview

## Communicable Disease Control Nursing Team

- Public health management of notifiable conditions.
- Immunisation support for Gold Coast Immunisation Service Providers (ISPs).
- Disease outbreak management support for vulnerable facilities.

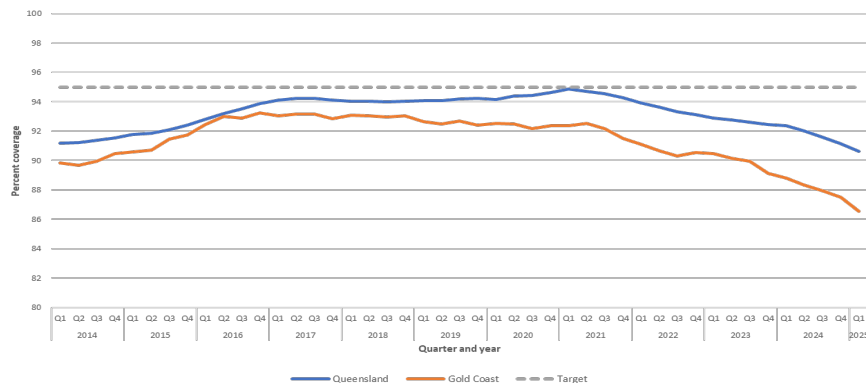
- Total number of ISPs on the Gold Coast: 302
- General Practices: 217
- Pharmacies: 85

## Current notifiable conditions of interest:

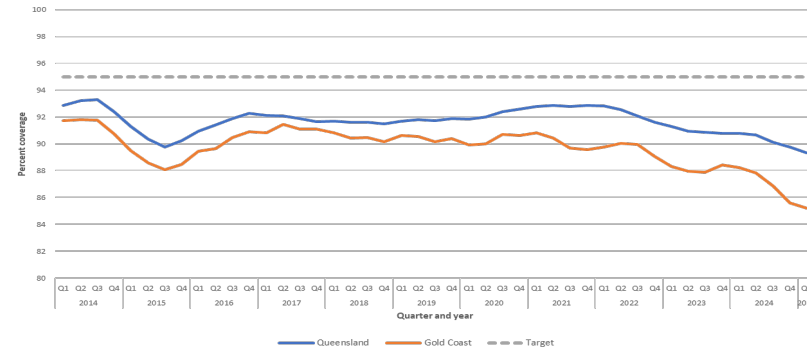
- Measles cases on the increase nationally.
- Japanese Encephalitis Virus found in mosquitoes + probable cases in QLD.
- Influenza is on the increase in QLD.

# Gold Coast Immunisation Coverage – 2014 to Q1 2025

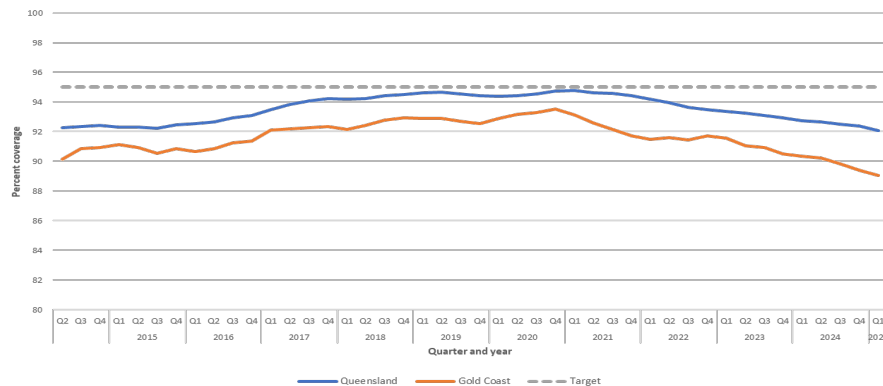
## Vaccination coverage for 1 year olds



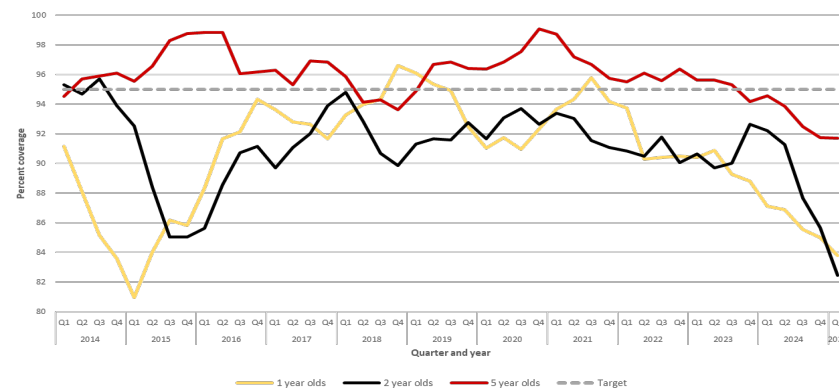
## Vaccination coverage for 2 year olds



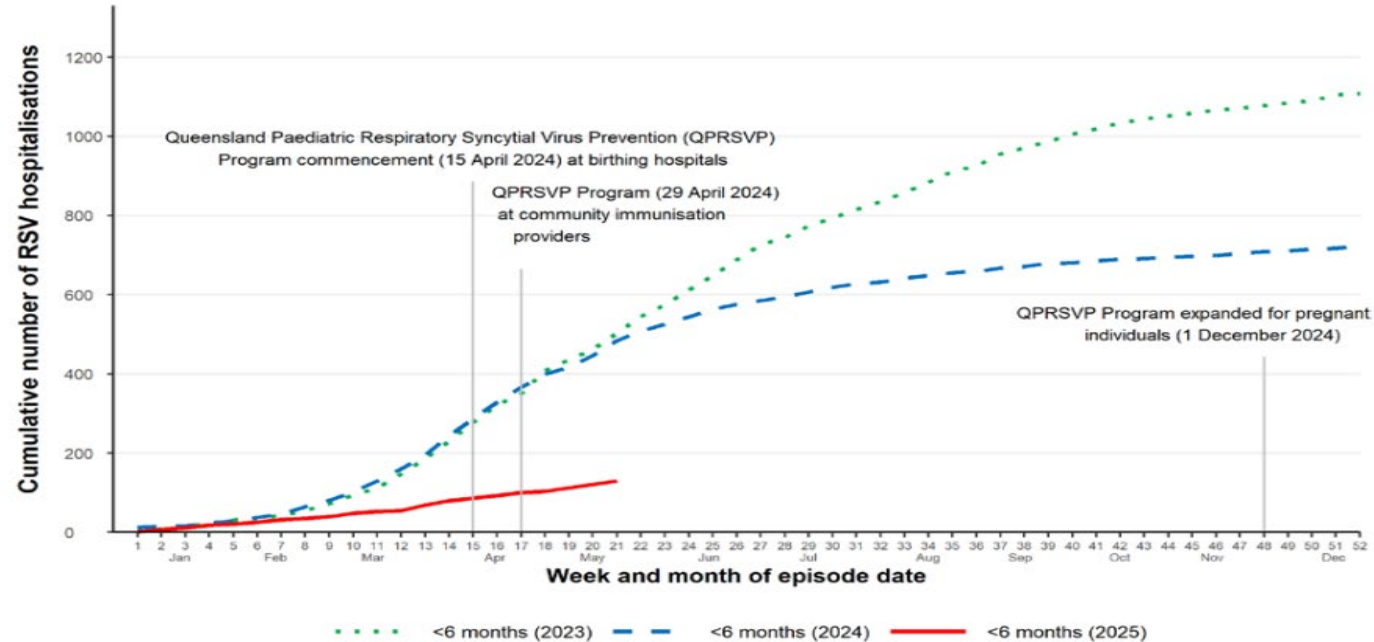
## Vaccination coverage for 5 year olds



## Vaccination coverage for Aboriginal and Torres Strait Islander children



# Impact of RSV immunisation program



*Figure 18: Cumulative RSV hospitalisations among infants aged <6 months, Queensland, 1 Jan 2023 to 25 May 2025.*

**Source:** Queensland Acute Respiratory Infection Surveillance Report Reporting Period: 1 January – 25 May 2025.  
[https://www.health.qld.gov.au/\\_data/assets/pdf\\_file/0026/1334654/ari-surveillance-report.pdf?version=10](https://www.health.qld.gov.au/_data/assets/pdf_file/0026/1334654/ari-surveillance-report.pdf?version=10)

# Vaccine Administration Errors (VAEs)

Before administration of any immunisation medicine ensure to check the **6 Rights:**

- ✓ **Patient:** Confirm name, DOB, allergies
- ✓ **Time:** Review National Immunisation Program schedule  
Check AIR
- ✓ **Drug:** Choose the correct immunisation medicine ? Requires diluent
- ✓ **Dose:** Ensure you administer the correct dosage
- ✓ **Route:** Correct site
- ✓ **Document:** Doctor's order required, patient consent, record on software and AIR

Any questions/concerns, contact GCPHU

Complete the VAE form for any administration errors

# Cold Chain Management

## Vaccine Management Protocol

Gold Coast Public Health Unit



- Have an up-to-date Immunisation Management Protocol (IMP) that is approved by GCPHU and accessible to all staff.
- Nominated primary and secondary person responsible for vaccine management.
- Temperature recording – data loggers and min/max thermometers, set up notifications if available, who will attend out-of-hours if safe.
- What is your backup plan in the event of a power outage or fridge malfunction (eg: transfer vaccines to another provider, battery backup)
- Refer to the National Vaccine Storage Guidelines – Strive for 5 (3rd edition) guidelines.



# Staff Training

- Ensure all staff involved in vaccine management have completed training (including Nurses, GPs, Practice Managers and Admin staff).
- Free Vaccine Management course available through the Cunningham Centre in collaboration with QHIP.
- Test your vaccine storage equipment and backup plan annually so staff are confident in a cold chain breach situation.



[Course 4 | Vaccine management](#)



**Figure 5:** Minimum/maximum thermometer placed in centre of vaccine stock

Note: A data logger (if available) can also be placed with the minimum/maximum probe.

[National vaccine storage guidelines - Strive for 5, 3rd edition](#)



# Disaster Management

## Two Gold Coast natural disasters in the last 16 months:

- Christmas storm 2023 – 69 cold chain breaches reported
- TC Alfred 2025 – 105 cold chain breaches reported

## Learnings from these events:

- Staff safety is the priority, do not attend the practice unless safe to do so.
- If your IMP back-up plan is not viable, keep the vaccines in your monitored vaccine fridge.
- Do not discard any QHIP-funded vaccines without GCPHU advice. Some vaccines are robust even in prolonged cold chain breaches.
- Quirks AQ Box data logger battery backup lasts around 8hrs, have a portable battery-powered min/max thermometer in your vaccine fridge.
- **DO NOT** place vaccines in a domestic fridge or a camping fridge– these are not suitable for vaccine storage.
- If transferring vaccines into hard sided coolers, ensure adequate ice bricks and ongoing monitoring and recording temperatures.

## Who to contact

- The Queensland Health Immunisation Program on [QHIP-ADMIN@health.qld.gov.au](mailto:QHIP-ADMIN@health.qld.gov.au) for:
  - Vaccine ordering
  - Reporting a cold chain breach
- The Gold Coast Public Health Unit on (07) 5667 3200 or [GCPHU-CDC@health.qld.gov.au](mailto:GCPHU-CDC@health.qld.gov.au) for:
  - Urgent cold chain breach advice
  - Immunisation enquiries

# QUESTIONS??

