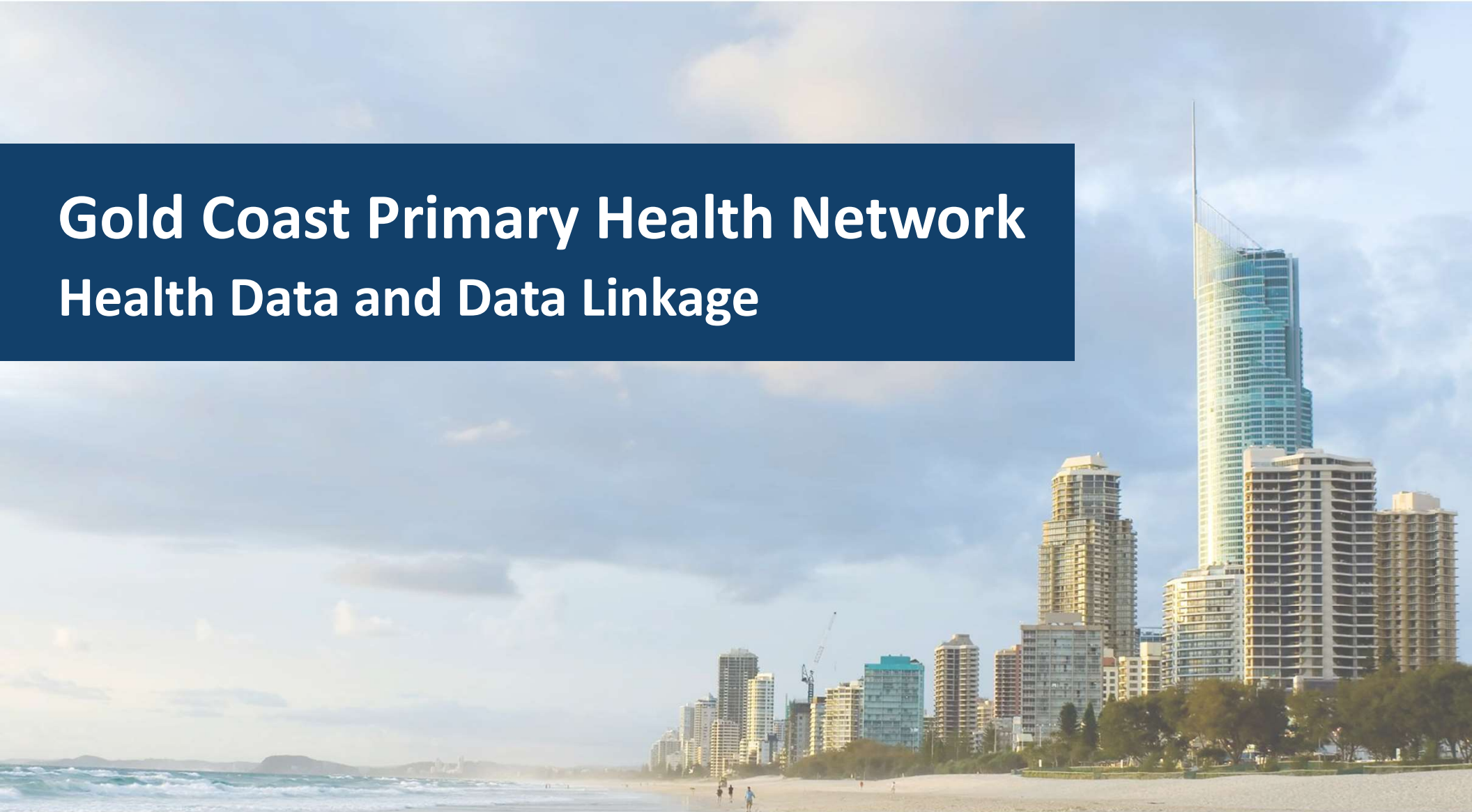




An Australian Government Initiative

Gold Coast Primary Health Network Health Data and Data Linkage



Growing importance of data



In Australia primary care and general practice in particular is often seen as the cornerstone of the healthcare system. Health information from primary care is used in two ways:

Primary purpose

- To better coordinate care and safety including across other providers who provide care to a patient (e.g. referral to a specialist)
- To support population health planning within a practice (recalling patients due for a health assessment)

Secondary purposes (more recently)

- Inform planning at a regional level
- Inform research to evaluate services or improve outcomes
- Combine with other data to inform planning and research (data linkage)

Is it on the radar for patients?

Is use of the health information and data that is held in primary care something patients think about?

If so, what are their general thoughts/assumptions, questions or concerns?



Data Sharing and Linkage -

Is this something on the radar for health consumers?

GCPHN CAC feedback continued

DISCUSSION

Few people in everyday life actually looked at/read or thought about how data at general practice is collected and used.

Initially, focus was on how they access their data for their own information, highlighting that information to patient and My Health Record is not working that well.

Data use and privacy policies that seek patient consent to collect their information is often ignored/overlooked.

Most people were happy to share their health data for most purposes though some raised concerns and would expect an opportunity and require detail to determine if they are willing to share for specific purposes such as research.

There is a preference for data usage and privacy policies to be in easy language with links to more detailed information. Members suggested having someone in a trusted position, such as a practice manager, that they could seek clarification of these policies.

Information regarding data can be overwhelming and easily misunderstood. They also discussed concerns with privacy and cyber breaches.

Data Sharing and Linkage - Is this something on the radar for health consumers?

GCPHN CAC feedback



83%

of members said that acceptable use of health data included:

- Individual patient care in practice
- Sharing with other health care providers for individual patient care e.g. referral to specialist
- Practice population health management (e.g. recall for a vaccination)
- Regional planning (deidentified information to indicate prevalence)
- Research (universities etc)
- Data linkage for research and planning (combine primary care data sets with others e.g. Qld Health)

Is anything missing?

What additional information, resources would you expect as a general practice to help your practice and your patients understand how health data is being used including data linkage?



PHASES



SMARTER TOOLS FOR STRONGER HEARTS

Preventing Heart Attacks and Stroke Events through Surveillance
5-Year Project

Statewide collaboration of Queensland PHNs
Funded by Queensland Health and Department of Health and Aged Care

phn
QUEENSLAND PHNs
An Australian Government Initiative

PHASES



phn
QUEENSLAND PHNs
An Australian Government Initiative